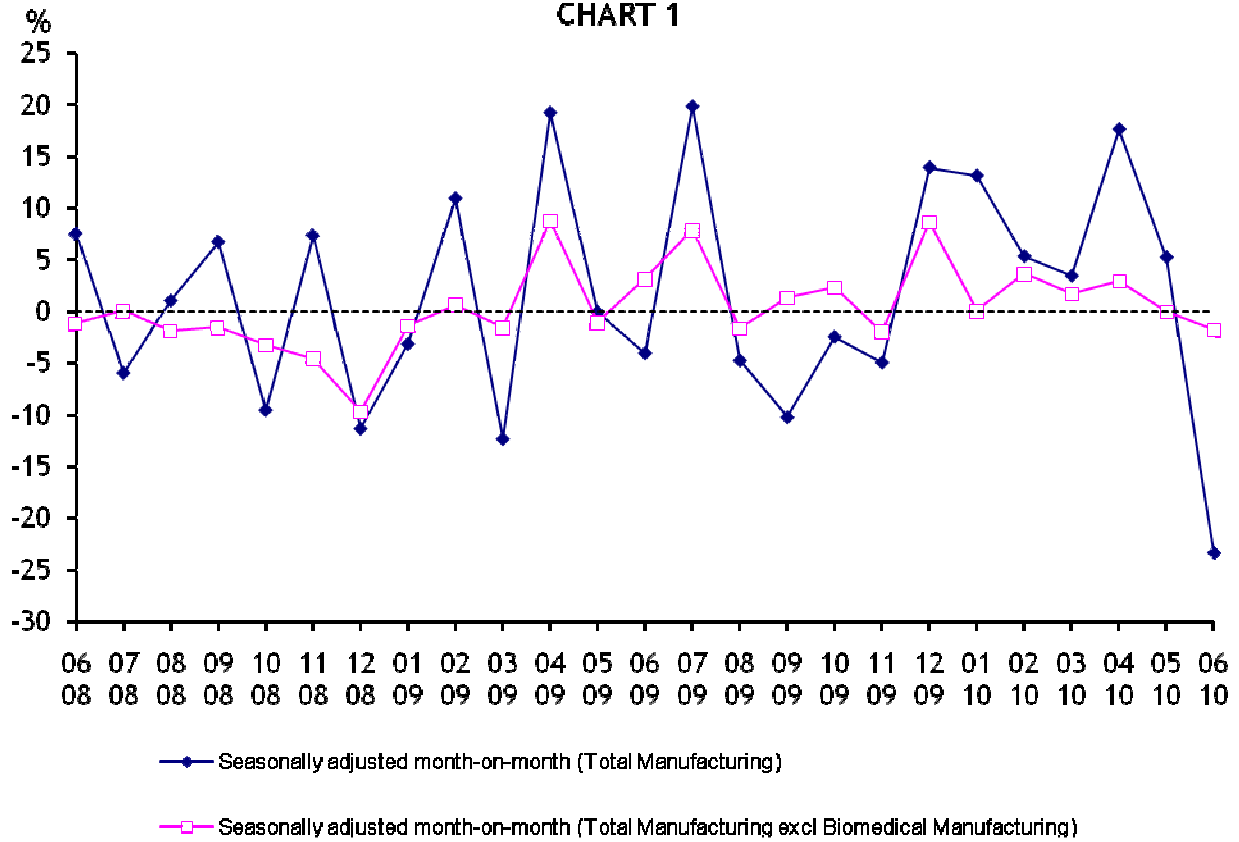
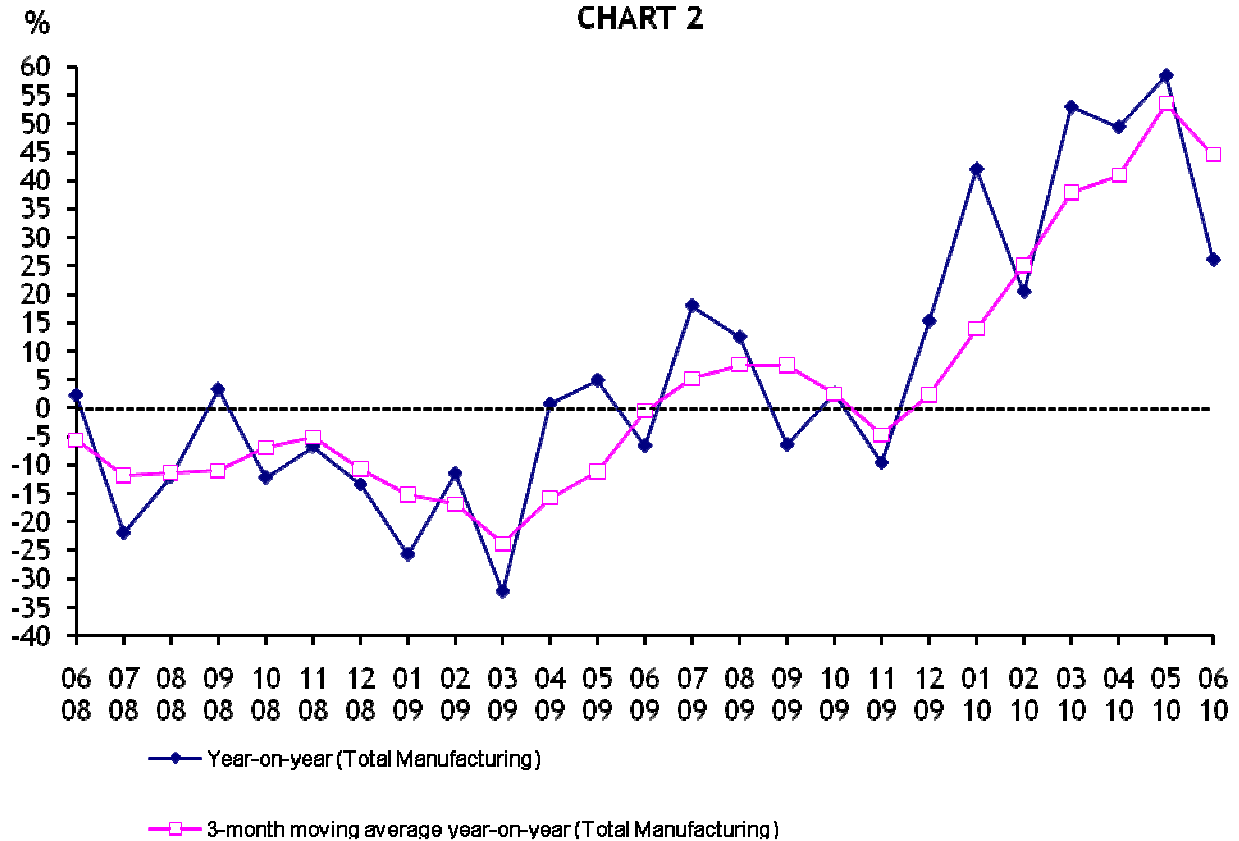


# GROWTH OF MANUFACTURING SECTOR

## CHART 1



## CHART 2



**TABLE 1 : MANUFACTURING SECTOR GROWTH**

Period		NSA INDEX Total Mfg ( 2007 = 100 )	YOY GROWTH (%) Total Mfg	SA INDEX Total Mfg	SA MOM GROWTH (%) Total Mfg	SA INDEX Total Mfg excl Biomedical Mfg	SA MOM GROWTH (%) Total Mfg excl Biomedical Mfg
2008	Jun	98.1	2.3	96.3	7.5	99.4	-1.2
	Jul	93.3	-21.9	90.5	-6.0	99.4	0.0
	Aug	91.2	-12.0	91.4	1.0	97.5	-1.9
	Sep	103.2	3.3	97.5	6.7	95.9	-1.6
	Oct	90.9	-12.2	88.1	-9.6	92.7	-3.3
	Nov	95.0	-6.7	94.5	7.3	88.4	-4.6
	Dec	87.6	-13.4	83.7	-11.4	79.8	-9.7
2009	Jan	74.8	-25.7	81.0	-3.2	78.7	-1.4
	Feb	85.0	-11.5	89.8	10.9	79.2	0.6
	Mar	79.0	-32.2	78.7	-12.4	77.9	-1.6
	Apr	92.5	0.8	93.8	19.2	84.7	8.7
	May	89.7	4.9	93.7	-0.1	83.8	-1.1
	Jun	91.6	-6.6	89.9	-4.1	86.4	3.1
	Jul	110.1	18.0	107.7	19.8	93.1	7.8
	Aug	102.6	12.5	102.5	-4.8	91.5	-1.7
	Sep	96.6	-6.4	91.9	-10.3	92.7	1.3
	Oct	93.3	2.6	89.6	-2.5	94.8	2.3
	Nov	85.9	-9.6	85.1	-5.0	92.9	-2.0
	Dec	101.0	15.3	96.9	13.9	100.9	8.6
2010	Jan	106.2	42.0	109.6	13.1	100.9	0.0
	Feb	102.4	20.5	115.4	5.3	104.5	3.6
	Mar	120.8	52.9	119.3	3.4	106.3	1.7
	Apr	138.2	49.4	140.3	17.6	109.4	2.9
	May	142.1	58.4	147.6	5.2	109.3	-0.1
	Jun*	115.5	26.1	113.0	-23.4	107.3	-1.8

Note:

- \* - Preliminary
- NSA Index - Non seasonally adjusted index
- MOM - Month-on-month
- YOY - Year-on-year

**TABLE 2: PERFORMANCE BY CLUSTERS**

Industry Cluster	2009 Value Added Share (%)	% change over corresponding period of previous year				% change of 3-month moving average over corresponding period of previous year		
		Apr 10	May 10	Jun 10*	Cum Jan - Jun 10	Apr 10	May 10	Jun 10*
<b>Electronics</b>	30.6	<b>59.6</b>	<b>52.1</b>	<b>46.8</b>	<b>60.6</b>	<b>63.3</b>	<b>62.2</b>	<b>52.6</b>
Semiconductors	19.6	97.7	70.2	74.9	89.3	97.9	89.5	80.8
Computer Peripherals	5.1	7.5	34.5	12.4	18.7	11.8	22.9	17.2
Data Storage	2.2	-3.3	17.8	-9.4	15.6	15.2	19.0	0.4
Infocomms & Consumer Electronics	2.8	11.1	15.0	16.0	22.5	19.4	20.7	14.1
Other Electronic Modules & Components	0.9	33.9	29.9	20.5	44.1	48.3	39.8	27.8
<b>Biomedical Manufacturing</b>	20.8	<b>96.2</b>	<b>117.7</b>	<b>29.8</b>	<b>70.6</b>	<b>68.4</b>	<b>105.1</b>	<b>84.7</b>
Pharmaceuticals	17.8	102.1	122.5	30.8	74.4	72.5	111.2	89.0
Medical Technology	3.0	0.1	30.3	17.3	14.2	9.7	18.3	15.5
<b>Chemicals</b>	4.5	<b>25.3</b>	<b>19.7</b>	<b>7.4</b>	<b>16.9</b>	<b>19.2</b>	<b>22.4</b>	<b>17.1</b>
Petroleum	-0.4	7.2	-7.1	-12.2	-8.5	-4.1	0.0	-4.4
Petrochemicals	0.04	39.8	52.8	30.0	41.6	40.9	44.3	40.5
Specialties	3.6	31.5	27.3	10.0	28.3	30.7	31.4	22.2
Others	1.3	36.9	18.5	10.7	25.7	24.9	27.3	20.7

**TABLE 2: PERFORMANCE BY CLUSTERS (Continued)**

Industry Cluster	2009 Value Added Share (%)	% change over corresponding period of previous year				% change of 3-month moving average over corresponding period of previous year		
		Apr 10	May 10	Jun 10*	Cum Jan - Jun 10	Apr 10	May 10	Jun 10*
<b>Precision Engineering</b>	12.9	39.8	37.6	32.5	37.0	37.9	42.2	36.4
Machinery & Systems	5.9	39.2	51.3	42.8	40.9	39.4	48.2	44.1
Precision Modules & Components	6.9	40.5	26.1	22.4	33.3	36.3	36.6	29.2
<b>Transport Engineering</b>	19.4	-23.7	-0.7	-3.6	-11.9	-17.8	-12.2	-10.2
Marine & Offshore Engineering	12.3	-40.1	-8.1	-17.0	-22.7	-28.3	-23.3	-23.6
Aerospace	6.2	-5.5	-0.6	5.8	-3.0	-7.2	-4.2	-0.2
Land	0.9	33.1	84.4	41.3	23.4	2.8	39.8	52.1
<b>General Manufacturing Industries</b>	11.8	15.7	17.7	11.0	14.6	14.0	18.5	14.7
Printing	2.8	11.8	12.2	4.9	6.7	4.0	11.4	9.6
Food, Beverages & Tobacco	3.5	6.1	5.7	8.9	6.9	6.4	7.4	6.9
Miscellaneous Industries	5.5	21.9	25.6	14.0	21.8	22.6	27.1	20.3
<b>Total Manufacturing</b>	100.0	49.4	58.4	26.1	41.6	40.9	53.5	44.5
<b>Manufacturing excluding Biomedical Manufacturing</b>	79.2	28.5	29.9	24.8	29.6	29.2	32.2	27.7

\* Preliminary

**TABLE 3: MONTHLY INDEX OF INDUSTRIAL PRODUCTION BY INDUSTRY CLUSTER, JUNE 2008 TO JUNE 2010**

Period		Electronics						Biomedical Manufacturing			Chemicals				
		Total	Semi-conductors	Computer Peripherals	Data Storage	Infocomms & Consumer Electronics	Other Electronic Modules & Components	Total	Pharmaceuticals	Medical Technology	Total	Petroleum	Petrochemicals	Specialties	Others
2007 = 100															
2008	Jun	98.6	103.7	109.9	92.0	67.2	110.1	86.6	84.5	112.5	100.8	101.2	95.8	110.1	89.7
	Jul	101.3	115.7	95.8	99.6	49.1	104.3	60.5	58.2	88.8	98.6	101.0	89.6	106.5	96.3
	Aug	96.9	105.0	98.2	112.2	46.4	105.1	70.1	68.8	85.9	94.9	101.5	83.6	101.9	84.4
	Sep	100.9	105.1	111.2	111.0	57.5	115.6	103.2	103.8	96.4	99.4	98.4	98.4	105.6	90.1
	Oct	93.1	102.2	93.3	96.6	46.6	106.6	72.6	70.6	98.3	94.3	102.7	89.4	91.7	80.6
	Nov	83.6	84.5	106.5	93.9	39.9	98.2	115.0	117.0	90.1	80.2	96.5	69.2	71.4	69.8
	Dec	71.7	70.6	101.3	69.0	42.0	80.8	97.4	96.9	103.7	77.5	95.3	69.0	61.9	70.8
2009	Jan	58.2	62.6	77.2	54.9	25.0	51.0	87.4	87.8	82.1	79.1	94.6	73.0	68.7	59.0
	Feb	61.8	60.2	91.8	73.3	29.5	53.6	125.0	127.8	90.3	76.1	85.6	69.0	71.9	70.5
	Mar	65.0	70.5	78.8	60.5	34.9	57.3	82.0	80.3	102.5	81.0	85.5	77.1	80.2	76.5
	Apr	73.2	78.5	81.1	85.0	33.9	69.6	124.2	126.2	99.3	80.5	79.0	82.8	85.4	65.5
	May	68.2	75.5	74.7	63.2	29.8	80.6	126.7	129.5	91.8	84.6	88.9	78.0	89.0	74.9
	Jun	81.7	87.1	102.9	80.6	39.2	82.3	102.2	102.4	99.5	91.1	88.7	86.5	101.4	88.9
	Jul	98.6	100.3	168.6	80.2	35.6	96.9	156.7	161.2	99.5	96.2	87.5	105.4	99.6	92.8
	Aug	93.7	96.3	155.9	74.7	33.9	98.2	138.5	143.0	82.0	90.5	85.0	96.0	93.2	87.9
	Sep	103.1	101.9	179.5	88.2	38.5	108.9	88.9	87.6	105.3	90.8	82.6	97.0	96.9	88.4
	Oct	108.3	116.0	170.7	82.2	38.0	104.8	73.0	70.2	108.1	92.3	85.2	99.7	97.5	83.2
	Nov	95.7	109.5	109.9	78.7	40.2	99.3	58.8	55.4	101.5	93.4	84.5	104.4	96.0	87.4
	Dec	114.0	135.7	116.3	97.7	46.3	100.0	84.3	81.0	125.8	98.9	85.5	111.9	106.9	91.0
2010	Jan	104.7	127.3	103.7	83.1	38.5	96.9	138.1	142.0	89.0	93.4	77.6	106.4	101.9	94.6
	Feb	95.6	117.0	93.6	78.2	32.6	82.3	150.8	155.4	92.9	83.4	69.3	98.3	89.2	78.0
	Mar	114.2	141.7	100.6	91.6	47.1	92.1	163.4	166.2	128.2	99.1	86.1	108.3	108.9	97.8
	Apr	116.8	155.1	87.1	82.1	37.7	93.2	243.6	255.1	99.4	100.9	84.7	115.8	112.3	89.7
	May	103.7	128.5	100.4	74.4	34.3	104.7	275.7	288.1	119.7	101.3	82.6	119.1	113.2	88.7
	Jun *	119.9	152.3	115.6	73.0	45.5	99.1	132.6	133.9	116.7	97.9	77.9	112.5	111.5	98.5

TABLE 3: MONTHLY INDEX OF INDUSTRIAL PRODUCTION BY INDUSTRY CLUSTER, JUNE 2008 TO JUNE 2010 (Continued)

Period	Precision Engineering			Transport Engineering				General Manufacturing Industries				Total Manu- facturing	Manufacturing excluding Biomedical Manufacturing	
	Total	Machinery & Systems	Precision Modules & Components	Total	Marine & Offshore Engineering	Aerospace	Land	Total	Printing	Food, Beverages & Tobacco	Miscella- neous Industries			
2007 = 100														
2008	Jun	99.5	107.4	92.7	113.3	117.7	108.3	113.3	101.3	97.7	105.4	101.1	98.1	101.5
	Jul	96.1	93.7	98.2	116.4	123.3	105.6	133.7	108.7	100.4	110.2	112.2	93.3	103.1
	Aug	91.1	87.3	94.2	102.2	101.0	105.8	88.9	106.0	98.6	108.9	108.5	91.2	97.5
	Sep	103.3	110.2	97.5	109.7	115.7	103.5	104.8	108.3	99.0	107.4	113.6	103.2	103.2
	Oct	87.4	83.2	91.0	108.4	111.8	105.7	100.4	107.0	97.7	109.3	110.6	90.9	96.4
	Nov	81.8	85.4	78.7	111.8	120.5	105.5	88.2	102.7	95.7	110.1	102.6	95.0	89.0
	Dec	83.2	97.3	71.2	117.9	122.2	118.9	81.7	101.2	88.6	116.2	100.5	87.6	84.7
2009	Jan	60.9	63.6	58.7	98.1	104.6	95.2	69.2	85.6	71.8	100.9	85.4	74.8	71.0
	Feb	62.6	64.8	60.7	107.4	110.1	106.6	93.7	80.8	72.4	91.6	79.9	85.0	73.1
	Mar	74.3	80.7	68.9	109.7	107.5	116.0	86.1	88.1	80.3	101.7	85.6	79.0	78.1
	Apr	71.2	76.9	66.3	118.5	133.7	110.4	59.3	93.4	79.5	98.0	98.3	92.5	83.0
	May	70.1	69.7	70.4	98.2	99.1	103.3	60.9	94.3	77.6	101.3	99.5	89.7	78.6
	Jun	82.4	88.8	77.0	101.2	100.3	105.8	78.7	100.7	78.0	102.9	111.4	91.6	88.4
	Jul	77.6	75.5	79.4	102.7	109.6	99.5	73.9	104.5	86.8	107.3	112.3	110.1	96.2
	Aug	77.7	78.9	76.7	96.5	92.7	98.5	111.0	100.9	85.7	101.9	108.1	102.6	91.9
	Sep	89.2	93.8	85.3	100.7	104.3	96.5	101.6	105.1	85.5	107.6	113.9	96.6	98.9
	Oct	83.7	82.5	84.7	90.6	88.7	90.7	102.7	108.4	91.0	106.6	118.1	93.3	99.4
	Nov	84.4	86.1	82.9	90.1	90.7	88.0	98.2	105.6	93.4	103.5	113.0	85.9	94.0
	Dec	98.1	110.5	87.6	100.9	96.1	93.8	180.4	104.6	88.0	109.0	111.0	101.0	106.0
2010	Jan	84.9	83.6	86.0	86.8	80.8	94.2	83.1	100.2	79.6	108.5	106.8	106.2	96.7
	Feb	76.7	78.7	75.0	87.1	81.8	96.0	69.8	83.4	64.2	93.6	88.3	102.4	87.9
	Mar	110.6	124.4	98.9	98.5	89.8	108.8	97.1	107.6	88.4	112.4	115.2	120.8	108.1
	Apr	99.6	107.1	93.2	90.5	80.1	104.3	79.0	108.1	88.9	104.0	119.8	138.2	106.7
	May	96.5	105.5	88.8	97.5	91.0	102.6	112.3	111.0	87.1	107.1	125.1	142.1	102.2
	Jun *	109.1	126.8	94.2	97.6	83.3	111.9	111.2	111.8	81.8	112.1	127.0	115.5	110.4

\* Preliminary